

## ATG's Faculty Workshop : Introduction to Macromedia Dreamweaver

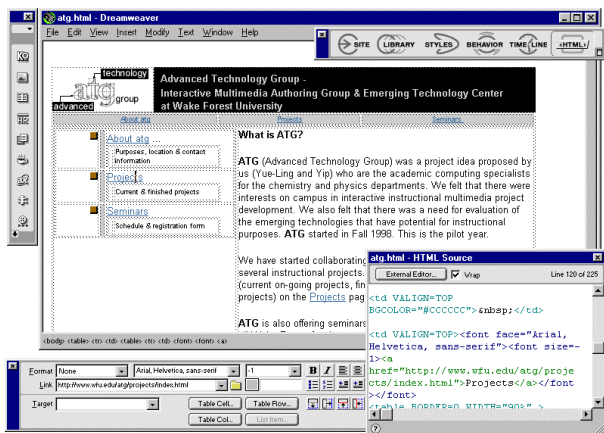
Date: Monday, Nov. 16, 1998  
 Time : 3-5 p.m.  
 Location : ZSR Library Room 204  
 Registration : <http://www.wfu.edu/atg/seminars/regform.html>

Experience with Netscape Editor/Composer or other web editors preferred.

### What is Macromedia Dreamweaver?



Macromedia Dreamweaver has been reviewed as the visual tool of choice for professional web site design. It is a more sophisticated web editing tool than the Netscape Editor/Composer and Microsoft Word. This workshop is an introduction to Dreamweaver.



### What we will cover in the workshop:

- ❖ Basic features (hands-on)
  - Text formatting
  - Create links
  - Insert images
  - Create & edit tables
  - Roundtrip HTML™
- ❖ Demonstration of Advanced features
  - Frames
  - Imagemaps
  - Link verification
  - Rollovers
  - Layers
  - Dynamic HTML
  - Knowledge Objects in Dreamweaver Attain

We encourage you to install the 90-day trial version of Dreamweaver from the WFU Software Installation Menu before coming to the workshop. For the detailed installation instructions, please visit ATG's Technotes web pages at: <http://www.wfu.edu/atg/technotes/index.html>